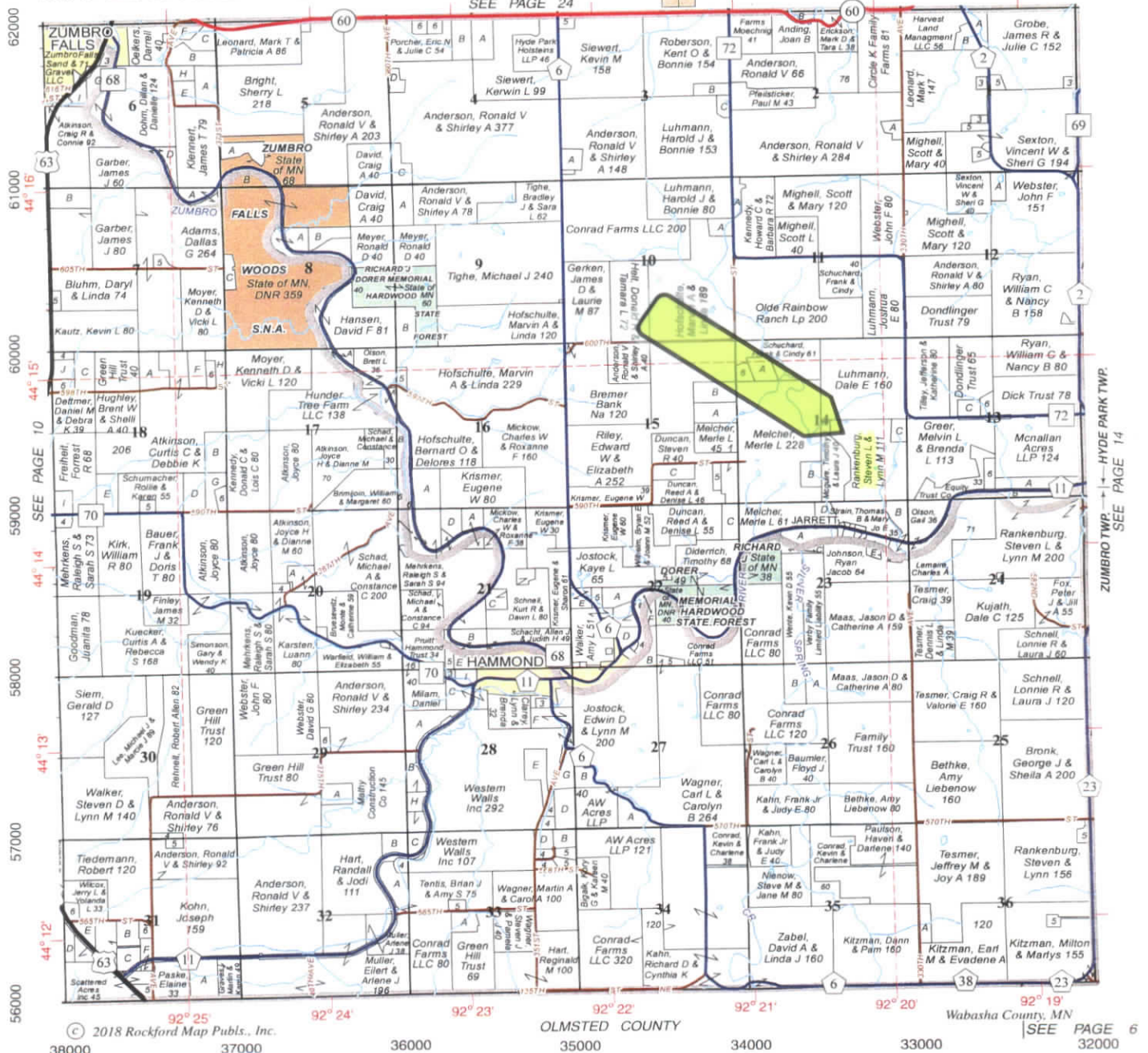


EAST PART ZUMBRO-HYDE PARK T.109N.-R.13W.

Refer to page 43 for keyed parcels



Thank you advertisers.

A lot of effort and hard work is put into offering the highest quality, most accurate, and overall best plat book on the market. Publishing these maps would not be possible without the continued support of our advertisers. We encourage our readers to support the businesses that made this book available to you.

ROCKFORD MAP PUBLISHERS



United States
Department of
Agriculture

Wabasha County, Minnesota

Farm 4739

Tract 4874

2020 Program Year

Map Created May 04, 2020



Unless otherwise noted:
Shares are 100% operator
Crops are non-irrigated
Corn = yellow for grain
Soybeans = common soybeans for grain
Wheat = HRS, HRW = Grain
Sunflower = Oil, Non-Oil = Grain
Oats and Barley = Spring for grain
Rye = for grain
Peas = process
Alfalfa, Mixed Forage AGM, GMA, IGS = for forage
Beans = Dry Edible
NAG = for GZ
Canola = Spring for seed

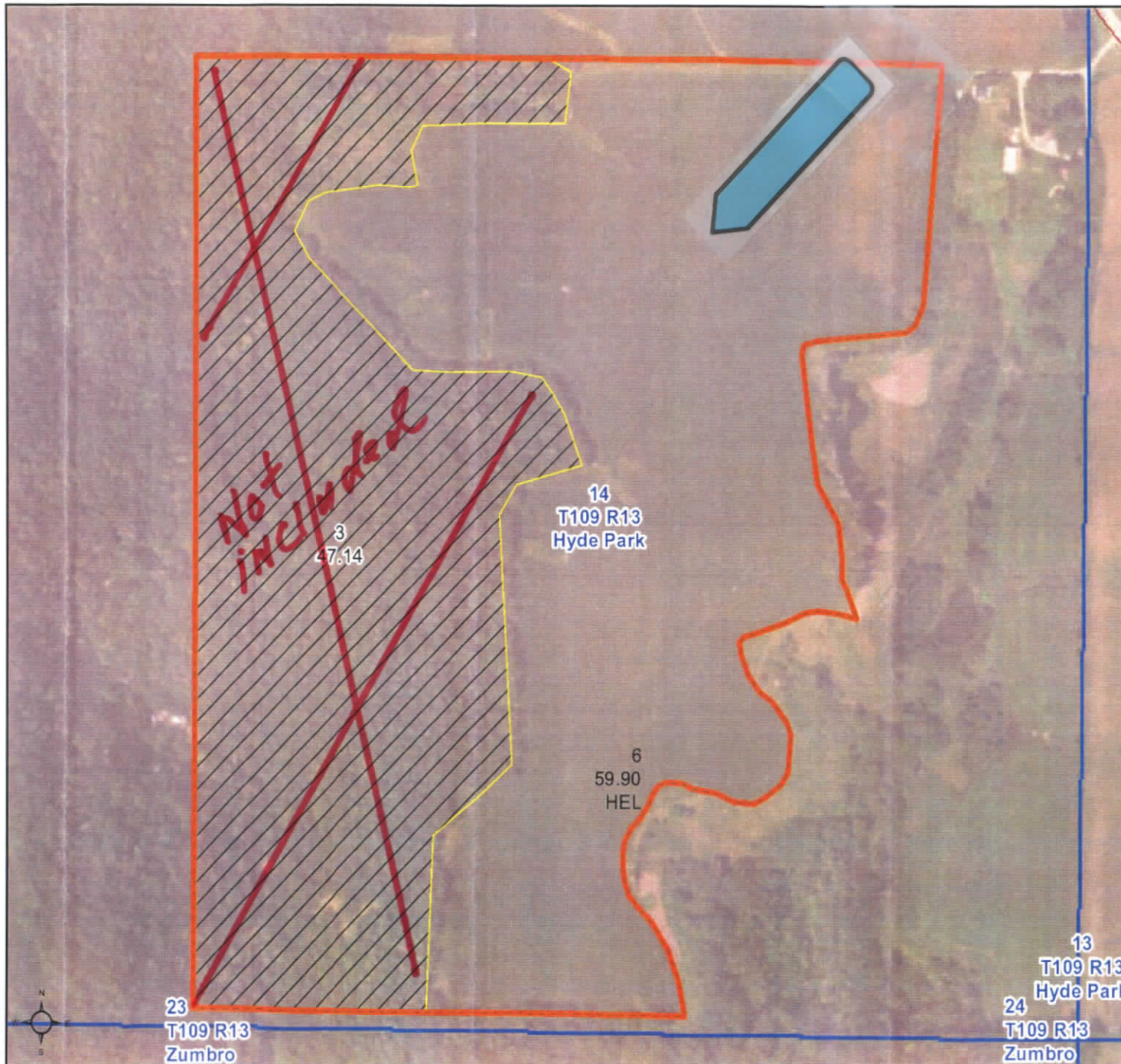
Common Land Unit

- Non-Cropland
- Cropland
- Tract Boundary
- Minnesota_Transparency_Polygon_021420

Wetland Determination Identifiers

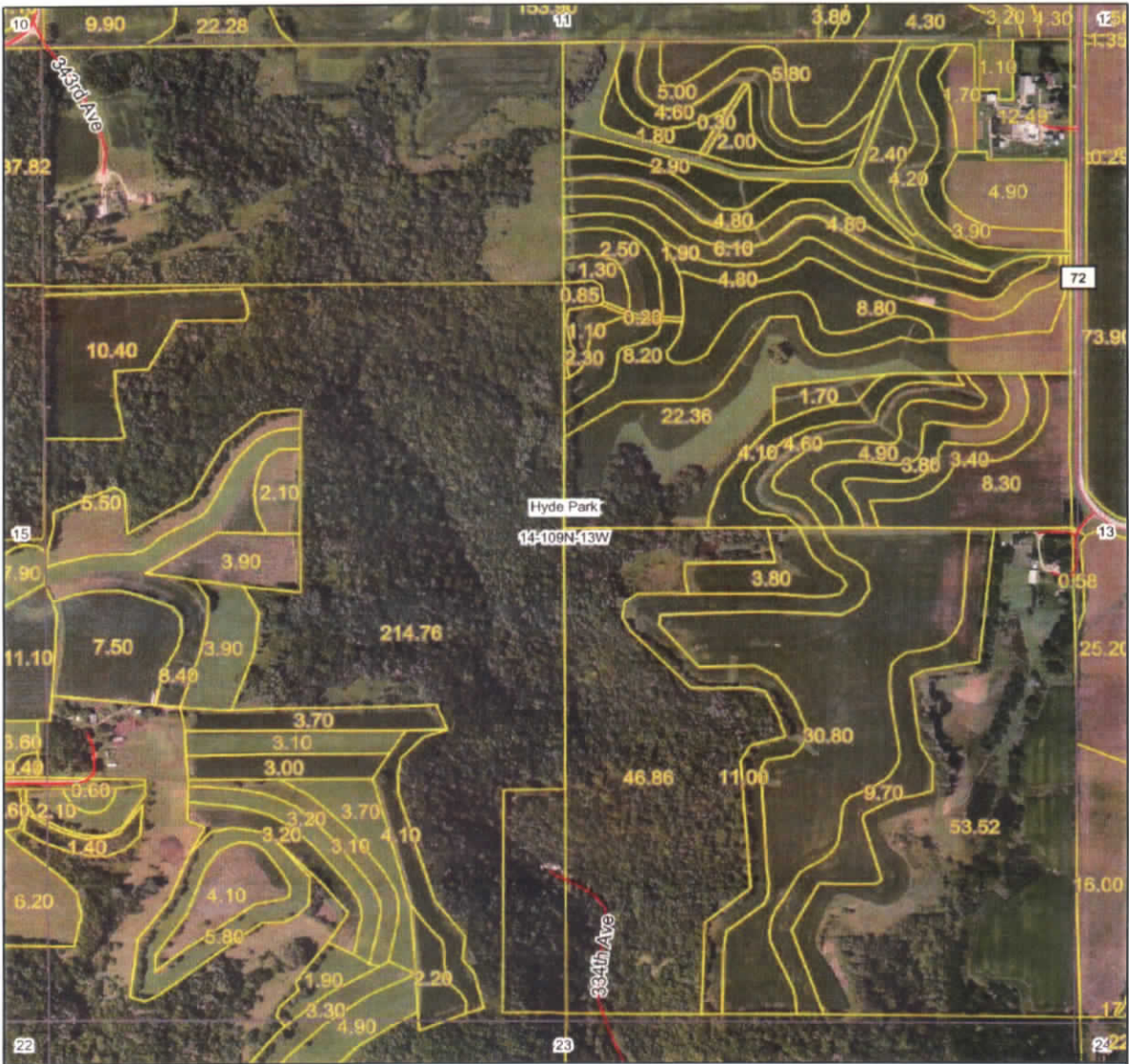
- Restricted Use
- Limited Restrictions
- Exempt from Conservation Compliance Provisions

Tract Cropland Total: 59.90 acres



United States Department of Agriculture (USDA) Farm Service Agency (FSA) maps are for FSA Program administration only. This map does not represent a legal survey or reflect actual ownership; rather it depicts the information provided directly from the producer and/or National Agricultural Imagery Program (NAIP) imagery. The producer accepts the data 'as is' and assumes all risks associated with its use. USDA-FSA assumes no responsibility for actual or consequential damage incurred as a result of any user's reliance on this data outside FSA Programs. Wetland identifiers do not represent the size, shape, or specific determination of the area. Refer to your original determination (CPA-026 and attached maps) for exact

Aerial Map



Map Center: 44° 14' 40.99, -92° 20' 25.93

0ft 812ft 1625ft

14-109N-13W
Wabasha County
Minnesota

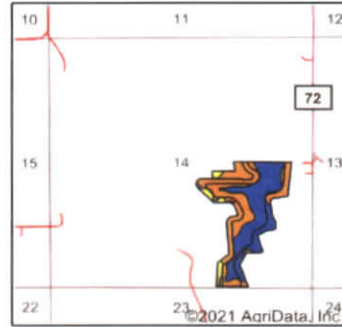
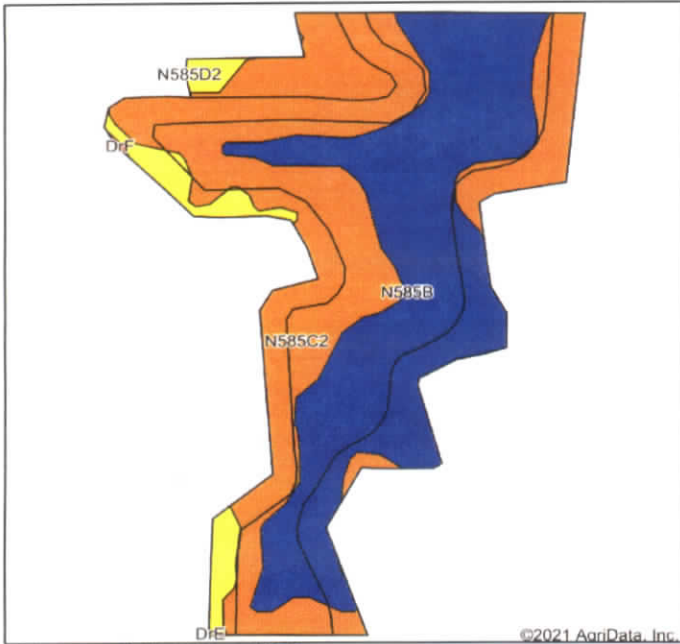


3/24/2021

Maps Provided By
surety
CUSTOMIZED ONLINE MAPPING
© Agribase, Inc. 2021 www.AgribaseInc.com

Field borders provided by Farm Service Agency as of 5/21/2008

Soils Map



State: **Minnesota**
 County: **Wabasha**
 Location: **14-109N-13W**
 Township: **Hyde Park**
 Acres: **55.3**
 Date: **3/24/2021**



Soils data provided by USDA and NRCS.

Area Symbol: MN157, Soil Area Version: 17

Code	Soil Description	Acres	Percent of field	PI Legend	Non-Irr Class *c	Productivity Index	Brome grass alfalfa hay	*n NCCPI Soybeans
N585C2	Mt. Carroll-Hersey complex, 6 to 12 percent slopes, moderately eroded	26.30	47.6%		Ile	80		82
N585B	Mt. Carroll-Hersey complex, 2 to 6 percent slopes	25.85	46.7%		Ile	90		84
N585D2	Mt. Carroll-Hersey complex, 12 to 18 percent slopes, moderately eroded	3.15	5.7%		Ile	67		75
Weighted Average						83.9	*n	*n 82.5

*n: The aggregation method is "Weighted Average using all components"

*c: Using Capabilities Class Dominant Condition Aggregation Method

Soils data provided by USDA and NRCS.