

**Schulz and Co. Realty**

*Bill Schulz, Broker*

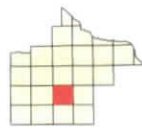
*P.O. Box 6  
Goodhue, MN 55027*

*Phone: 651-923-4769 • Fax: 651-923-5096*

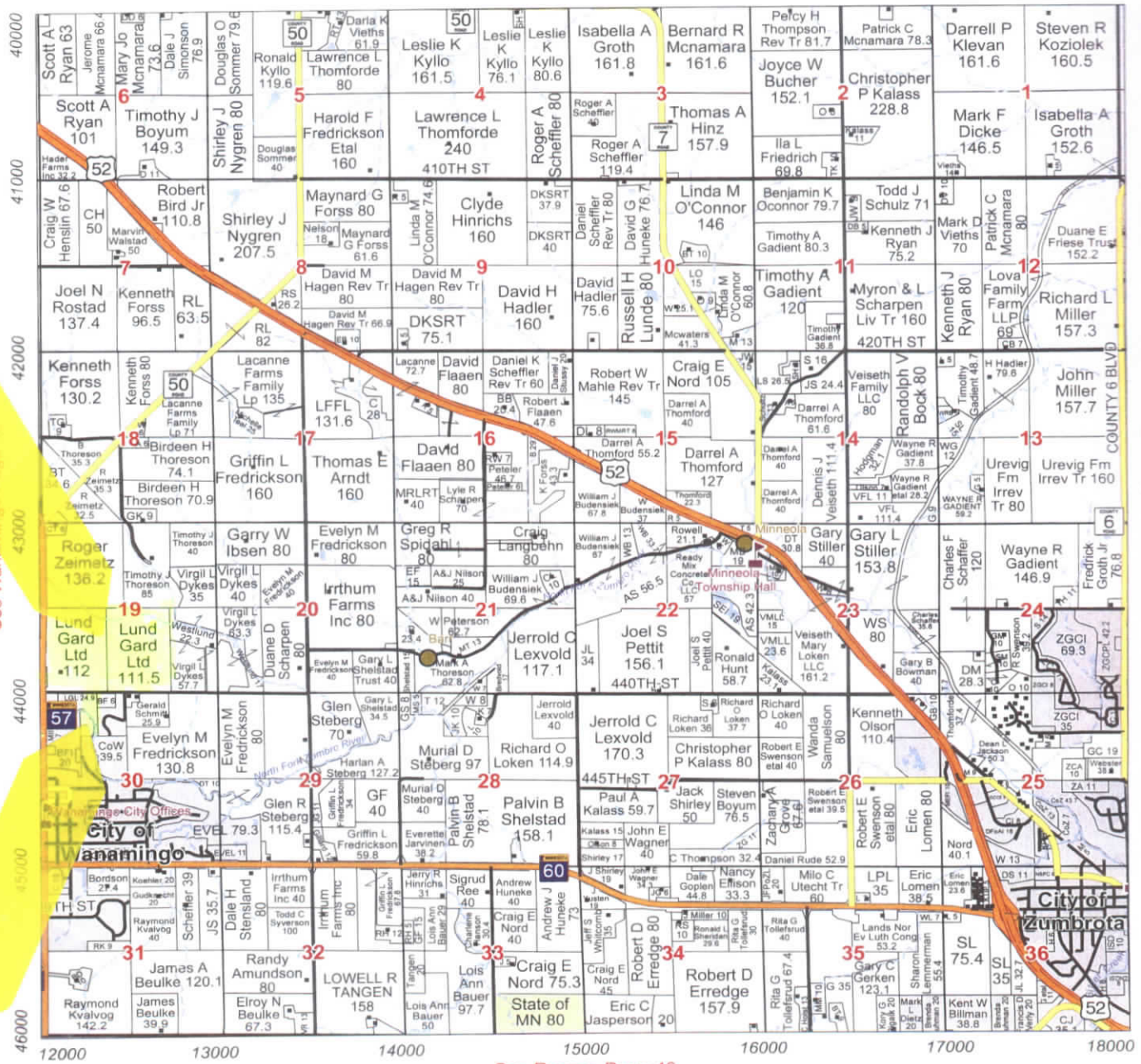
**LUND GUARD LTD PROPERTY**

<b>LISTED PRICE</b>	<b>\$ 1,290,000</b>
<b>TERMS</b>	<b>CASH</b>
<b>APPROX. ACRES</b>	<b>248</b>
<b>APPROX. TILLABLE ACRES - SEE ATTACHED FSA MAP</b>	
<b>2019 REAL ESTATE TAXES</b>	<b>\$ 9,368</b>

**This information sheet is subject to errors and omissions. Schulz And Company Realty and Broker Willard B. Schulz do not assume the responsibility for the accuracy of the information contained in this document.**



See Belle Creek Page 6



See Wanamingo Page 48

See Zumbrota Page 56

See Roscoe Page 40

# RIVER COUNTRY CO-OP

*Your local Co-op, here to serve you!*

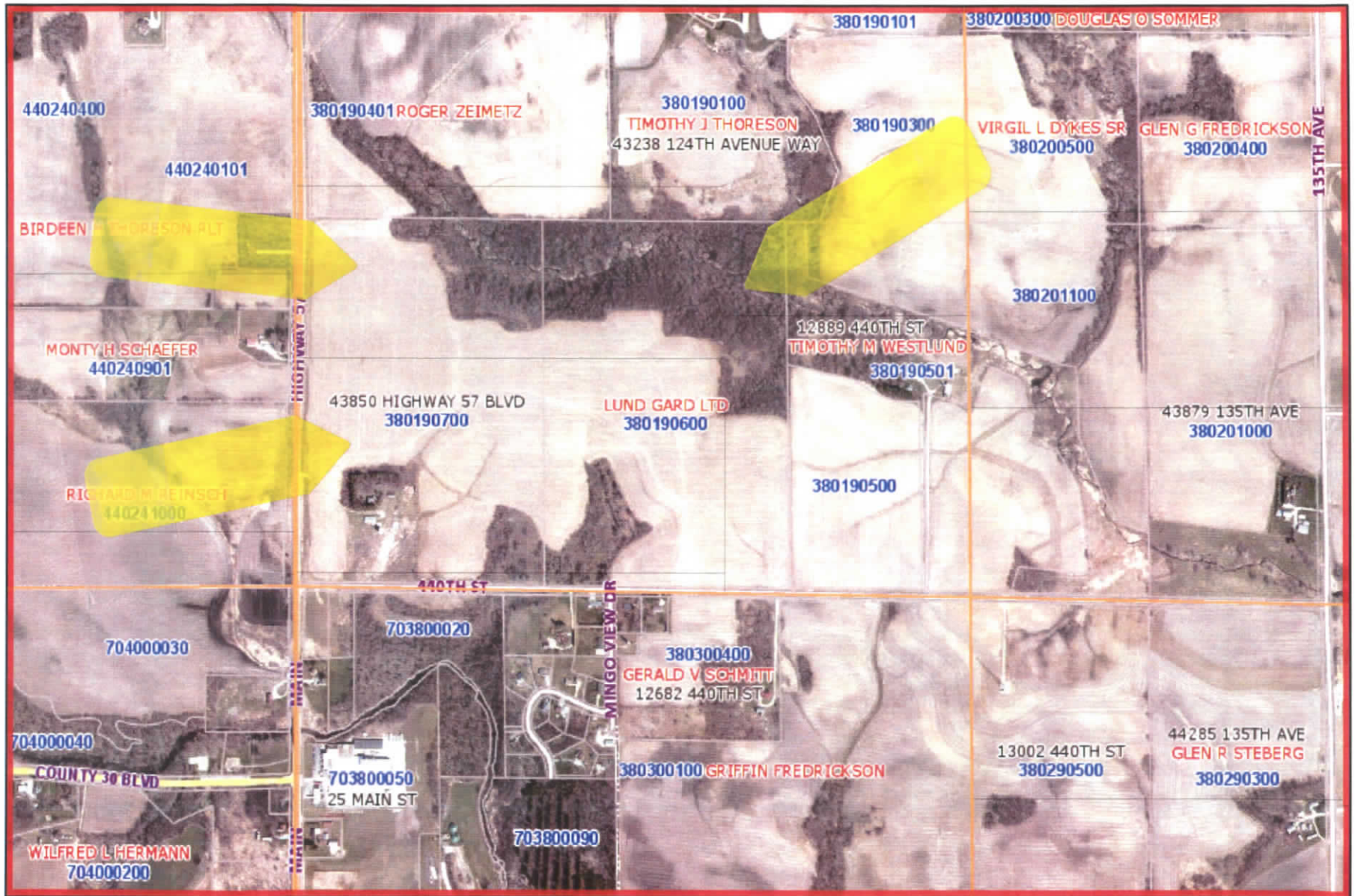
50% cash patronage and 1998's stock retired in 2007  
We're the leader in returning your cash!

**Kenyon location:**  
Diesel fuel, LP Gas & Convenience Store  
507-789-6201 or 800-375-5027

**Randolph location:**  
Agronomy  
507-263-4631 or 800-657-3285

**Miesville location:**  
Feed, Seeds & Convenience Store  
651-437-3527 or 888-456-7501





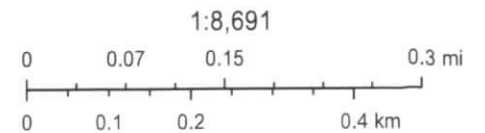


# ArcGIS WebMap



July 9, 2019

- LandBaseTPV\_7227
- Major Roads 9,600
- County Roads 9,600
- Township or Other Roads
- US Highway
- County Roads - Gravel
- Township or Other Roads
- State Highway
- County Roads - Paved
- ESRI Major Roads





# Aerial Map



Map Center: 44° 19' 9.75, -92° 46' 51.64



**19-110N-16W**  
**Goodhue County**  
**Minnesota**



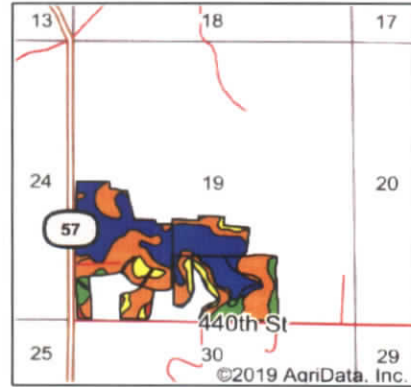
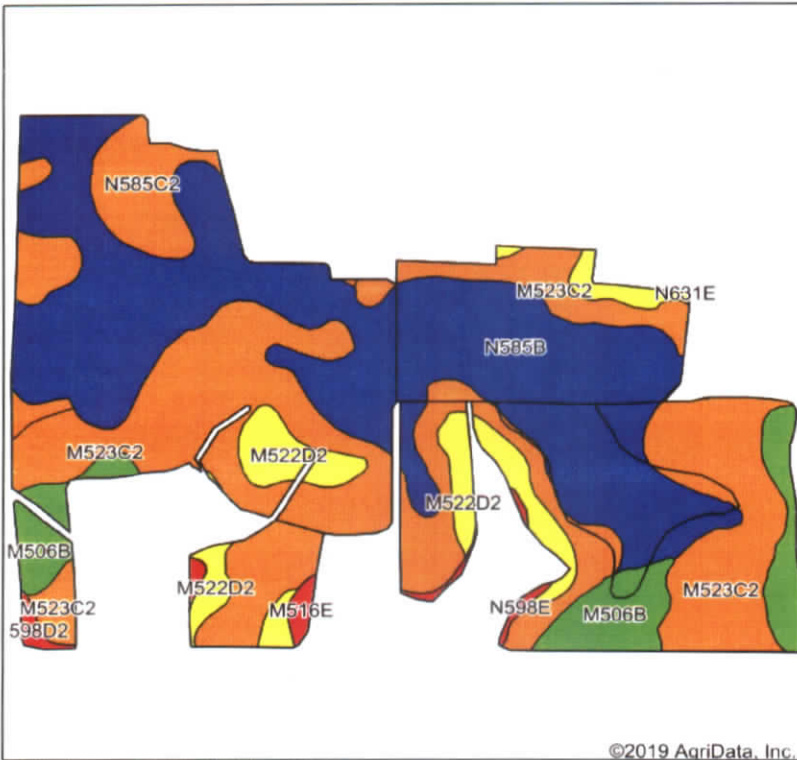
6/24/2019



© AgriData, Inc. 2019 www.AgriDataInc.com

Field borders provided by Farm Service Agency as of 5/21/2008.

# Soils Map



State: **Minnesota**  
 County: **Goodhue**  
 Location: **19-110N-16W**  
 Township: **Minneola**  
 Acres: **133.49**  
 Date: **6/24/2019**



Soils data provided by USDA and NRCS.

Area Symbol: MN049, Soil Area Version: 14

Code	Soil Description	Acres	Percent of field	PI Legend	Non-Irr Class *c	Productivity Index	Alfalfa hay	Corn	Kentucky bluegrass	Oats	Soybeans	*n NCCPI Soybeans
N585B	Mt. Carroll-Hersey complex, 2 to 6 percent slopes	53.31	39.9%		Ile	90	5.7	185		93	54	69
M523C2	Bassett-Kasson complex, 6 to 12 percent slopes, eroded	49.98	37.4%		IIle	77						53
M506B	Kasson silt loam, 2 to 6 percent slopes	10.08	7.6%		Ile	95						64
M522D2	Bassett-Racine complex, 12 to 18 percent slopes, moderately eroded	9.96	7.5%		IVe	65	2.8	131	2.3	45	39	51
N585C2	Mt. Carroll-Hersey complex, 6 to 12 percent slopes, moderately eroded	8.13	6.1%		IIle	80	4.8	165		78	48	56
N598D2	Winneshiek-Waucoma complex, 12 to 18 percent slopes, moderately eroded	0.78	0.6%		IVe	45	2.5	93	2.2	41	27	34
N598E	Winneshiek-Waucoma complex, 18 to 35 percent slopes	0.66	0.5%		VIe	24			1.9			30
M516E	Wangs-Wagen Prairie complex, 18 to 35 percent slopes	0.59	0.4%		VIIe	14			1.3			17
<b>Weighted Average</b>						<b>82.1</b>	<b>2.8</b>	<b>94.2</b>	<b>0.2</b>	<b>45.5</b>	<b>27.6</b>	<b>*n 59.9</b>

\*n: The aggregation method is "Weighted Average using major components"  
 \*c: Using Capabilities Class Dominant Condition Aggregation Method

Soils data provided by USDA and NRCS.